

International Orders

Thank you for your interest in our H2=E Therapy system.

Below is a detailed explanation of how we handle international orders, including delivery timeframes, import procedures.

1. Initial Contact

Please contact us before placing an order if you are outside the UK. So we can double check that we can send your parcel to your country.

2. We Deducted 15%

We send your parcel direct from the UK, and discount 15%, this is because when your parcel arrives in your country, you will have to pay import tax which is normally around 20%, this way the price is fairly balanced. Please message us to get the deduction code for international orders.

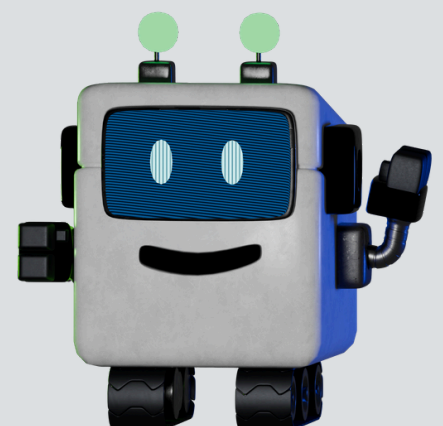
3. Delivery Times

Once your order has go through our website, we send your parcel next day, and the delivery time is around 3-7 days. Delivery cost is included in the price. Plus, your transaction is covered by stripe, so you have peace of mind with your purchase. Also we make sure all the correct details and HS Codes are on your parcel making sure of a smooth delivery.

Countries we will export to

Because we know some countries are more difficult to deliver to for this reason, we only delivery to the following countries.

- Republic of Ireland
- France
- Germany
- Netherlands
- Belgium
- Austria
- Denmark
- Sweden
- Finland
- Spain
- Portugal
- Italy
- Czech Republic
- Poland
- United States
- Canada
- Australia
- New Zealand



If you do have any questions, please message us, we are here to help.